




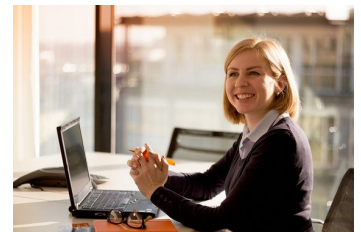
Support

Logistics & Customs Specialist

Job-ID: 7580

-  Poland - Wroclaw
-  Young professionals
-  Full-time

YOUR CONTACT



Mariana Grushkovyk

Phone +48 728 870 260

E-Mail: career.poland@hemmersbach.com

BE PART OF US

Hemmersbach provides IT infrastructure services in more than 190 countries with 50+ own subsidiaries. We deliver exclusively for the leading companies in the IT industry. As pragmatic problem solvers, we not only enthuse our customers, but also make the world a better place: 20% of our profits go into our Direct Actions Hemmersbach Rhino Force and Hemmersbach Kids' Family. That's why Hemmersbach is The Social Purpose IT Company.

YOUR TASKS

- Working together with customs brokers/agents in other countries (import handling)
- Ensuring compliance with all customs regulations, required certificates and reports for import processes around the world
- Contacting with customs officers in case of needed information
- Preparation of complex export and import documentation

We use cookies to enable website functionality, understand the performance of our site, provide social media features, and serve more relevant content to you. For more information, please review our [privacy policy](#)

OUR REQUIREMENTS

- Very good English skills (speaking & writing)
- Proven experience in international import
- MS Office knowledge (Excel, Word, PowerPoint)
- Good organizational, cooperation and time management skills
- Extensive knowledge of foreign trade matters
- Experience with IT spare parts supply chain will be an asset

YOUR BENEFITS

- A secure job position in an exponentially growing international IT company
- Room to implement your own ideas, challenges within your own responsibility
- Possibility to grow within a multicultural work environment with a flat structure and direct, informal communication
- A job with purpose - possibility to contribute to our CSR projects: Hemmersbach Rhino Force, Hemmersbach Kids' Family
- Welcome package, full introduction into the company, Buddy program to help you get started
- Language courses, discounts in partner universities, a wide range of trainings on our internal e-learning platform, for our employees' kids access to educational modules
- Remote work possibility during the pandemic
- A package of co-funded benefits: lunches and multisport card, private health care as well as life insurance for you, your partner, and family members

Would you like to join our team? Please send your CV in English.

At Hemmersbach we believe in equal opportunities that's why we welcome applications from all suitably qualified persons regardless of their race, gender, disability, religion/belief, sexual orientation, or age.

We use cookies to enable website functionality, understand the performance of our site, provide social media features, and serve more relevant content to you. For more information, please review our [privacy policy](#)